



HALF-DAY PACKAGE

CHF 90.– / pers. / day
Minimum of 5 people

Including:

- Welcome coffee: coffee/tea or juice
- Morning coffee break: coffee or tea, pastry, fruit juices and fruit basket
- or**
- Afternoon coffee break: coffee or tea, cakes, fruit juices and fruit basket
- 3-course lunch, mineral water and coffee
- Rental equiped conference room
- Mineral water in room

FULL-DAY PACKAGE

CHF 110.– / pers. / day
Minimum of 5 people

Including:

- Welcome coffee: coffee/tea or juice
- Morning coffee break: coffee or tea, pastry, fruit juices and fruit basket
- 3-course lunch, mineral water and coffee
- Afternoon coffee break: coffee or tea, cakes, fruit juices and fruit basket
- Rental equiped conference room
- Mineral water in room

RESIDENTIAL PACKAGE

FROM CHF 267.–
Minimum of 5 people

Including:

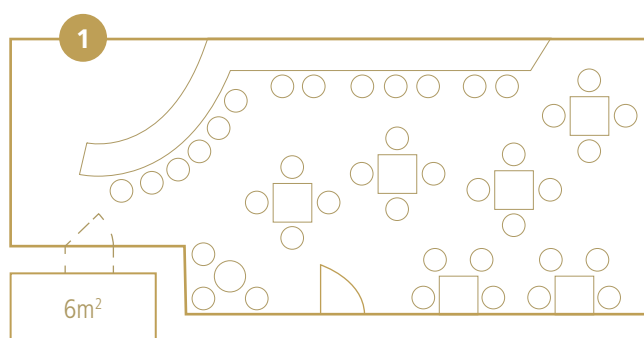
- Stay in a standard double room in single occupancy
- Buffet breakfast
- Entrance to the Wellness area
- Full-day package

BOARD PACKAGE

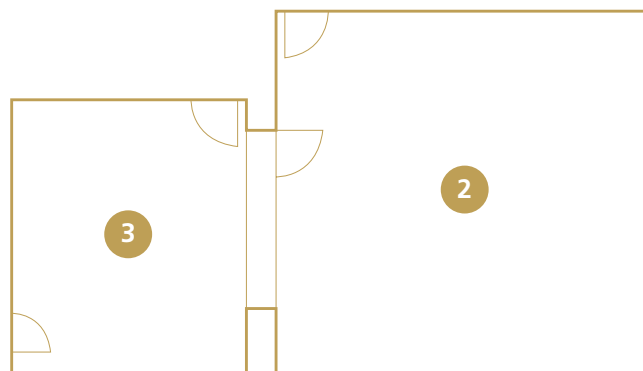
We also rent our rooms without additional services.

- Half-day: **CHF 190.–**
- Full-day: **CHF 290.–**
- 1 h: **CHF 70.–**

ROOMS	m ²	DINER	COCKTAIL
Caveau ¹	53	20	35
Brasserie (<i>can be privatised</i>) ²	45	35	50
Léman (<i>can be privatised</i>) ³	22	22	25
Brasserie + Léman	67	60	80
Salon du Bochet	40	-	-
Jardins extérieurs	-	45	120



WINE CELLAR



The caveau is fully equipped and accessible to people with reduced mobility.



Rooms are equipped with video projector, flipchart, notebooks, pens, microphones, Wi-Fi.



By car: Highway A1 Exit Morges.
From Morges Station: Bus n° 703 direction Lussy-sur-Morges or Bus n° 724 direction Etoy.